

FLEXIBLE LED STRIP COB

Ref: 31.001	6500°K
Ref: 31.002	4000°K
Ref: 31.003	3000°K
Ref: 31.004	2500°K

Single-colour flexible strip with COB technology that allow us to light up luminaires achieving a non-dotting effect. To prevent the usual problems of

the COB technology, our COB led strips have a small iron strip incorporated at the back of the PCB which improves heat dissipation. Its strong point is that it offers 80% more in torsional resistance than the rest of COB strips on the market.

PCB 10 mm.

Requires use with a led profile to permit dissipation.

Heat dissipation tape included.

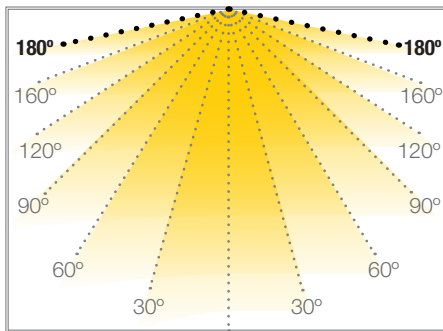
Daily recommended use: 20h.

Maximum connection in open circuit: 5 m.

Maximum connection in closed circuit: 10 m.

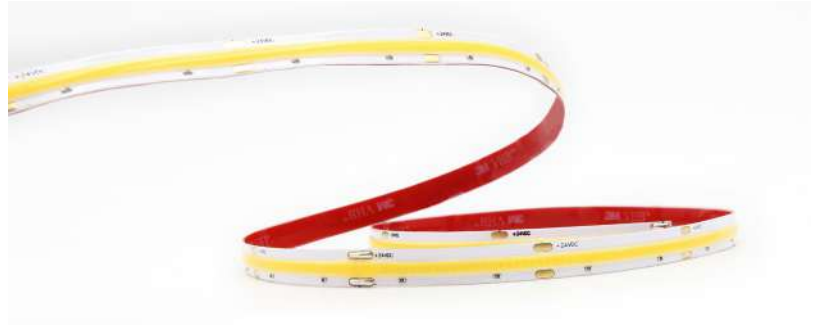
Estimated lifespan: 50000h *

* Depending on the dissipation of the profile, the daily working hours and the external environmental working temperature.

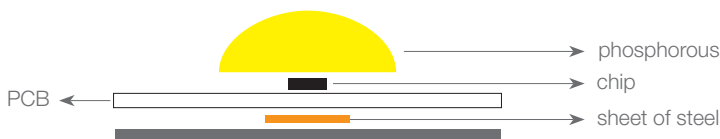


COB

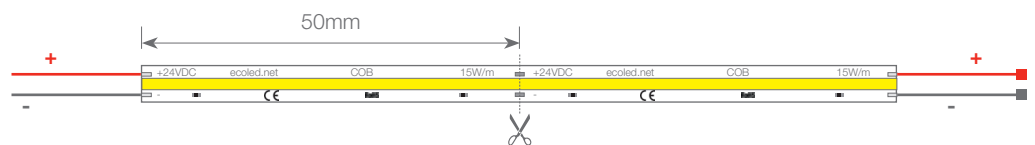
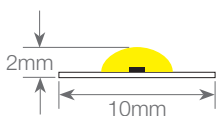
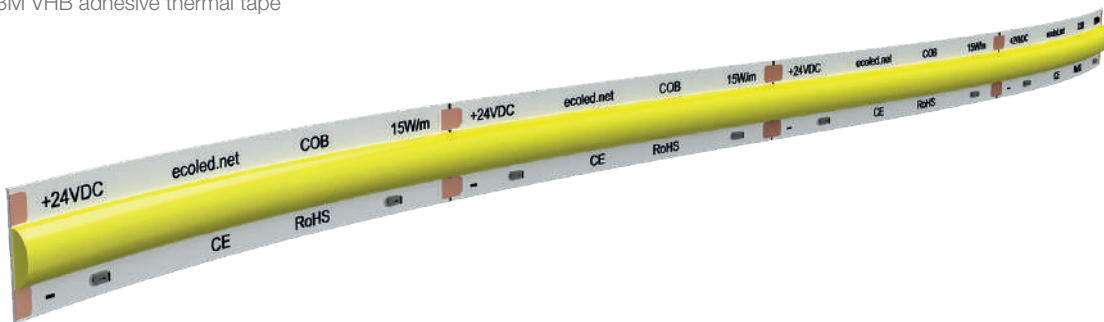
FLEXIBLE LED STRIP



Power (W)	15W/m
Voltage (V)	24V
Led type	COB
Lumens (6500°K)	1530 Lm/m
Lumens (4000°K)	1500 Lm/m
Lumens (3000°K)	1400 Lm/m
Lumens (2500°K)	1330 Lm/m
CRI	>80
Light emission	180°
Waterproofing	IP20
N° chips/m	480
Measurements	2x10x5000mm
Cutttable	every 50mm
PCB	10mm
Working temperature	-20°C / +40°C
Apt for	indoor
Packaging	1 roll/5m
Guarantee	2 years



3M VHB adhesive thermal tape

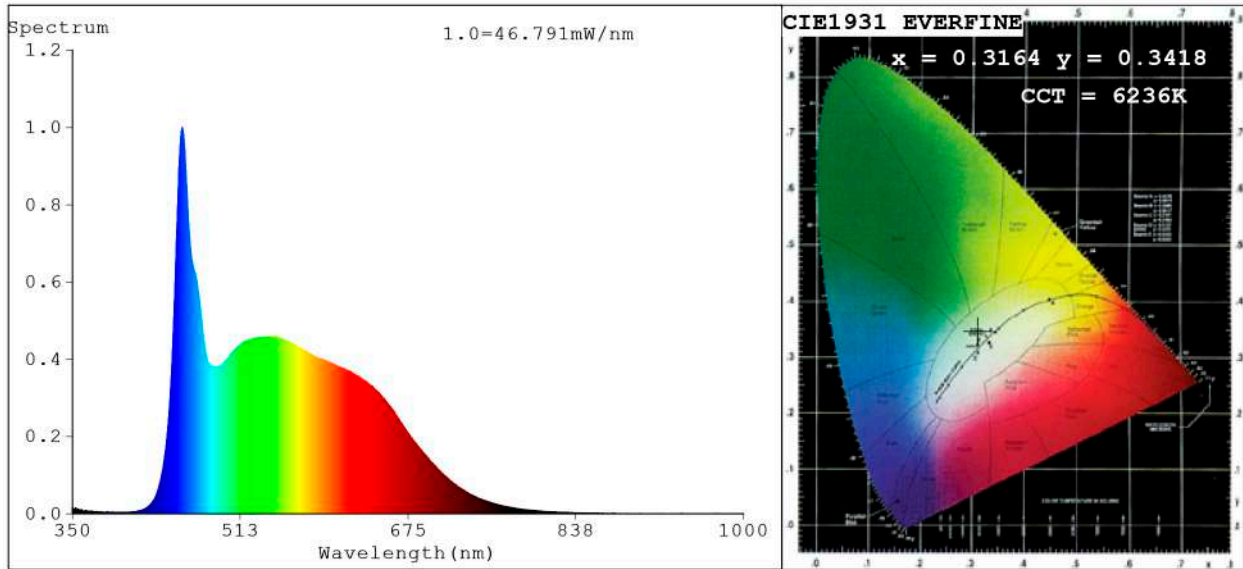


BARCELONA
C/ Carles Buhigues, 13
08420 Canovelles
Info@luznegra.net
Tel: +34 938 402 598

MADRID
C/ Adaptación, 27
28906 Getafe
centro@luznegra.net
Tel: +34 916 416 081

PARIS
113 Avenue Joffre
77450 Esbly
france@luznegra.net
Tel: +33 (0) 160 426 585

Spectrum Test Report



Color Parameters:

Chromaticity Coordinate: $x=0.3164$ $y=0.3418$ / $u'=0.1957$ $v'=0.4755$
 CCT=6236K (Duv=0.0078) Dominant WL: $\lambda_d = 498.2$ nm Purity=5.3%
 Ratio: R=14.9% G=77.9% B=7.2%; Peak WL: $\lambda_p = 456.4$ nm FWHM=27.1nm
 Render Index: Ra=91.3 CRI=88.6 TM30: Rf=87 Rg=95
 R1 =93 R2 =98 R3 =96 R4 =85 R5 =90 R6 =96 R7 =89
 R8 =85 R9 =69 R10=96 R11=87 R12=65 R13=95 R14=98 R15=89

Photo Parameters:

Flux = 1442 lm Eff. : 99.84 lm/W Fe = 5.142 W Scotopic: 3488.5 S/P: 2.4195

Electrical parameters:

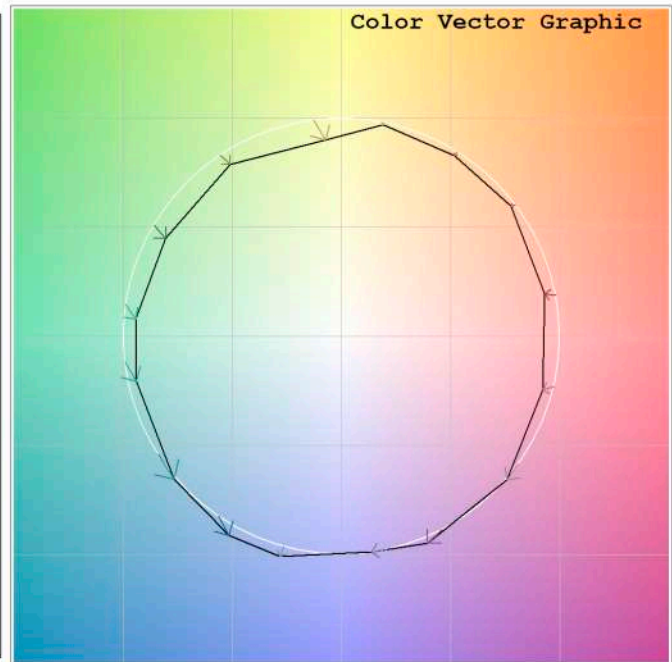
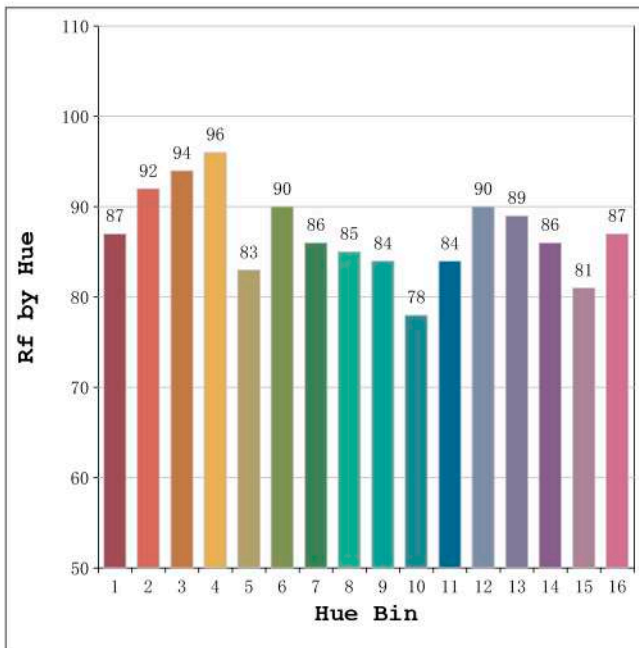
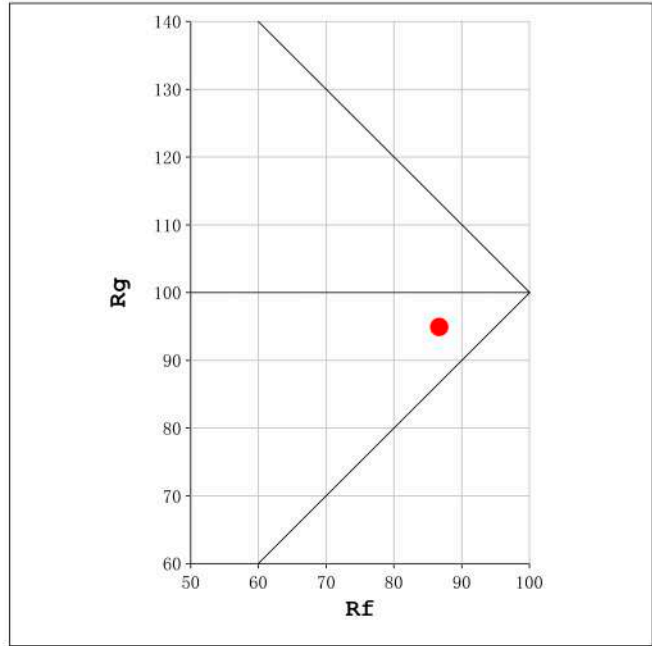
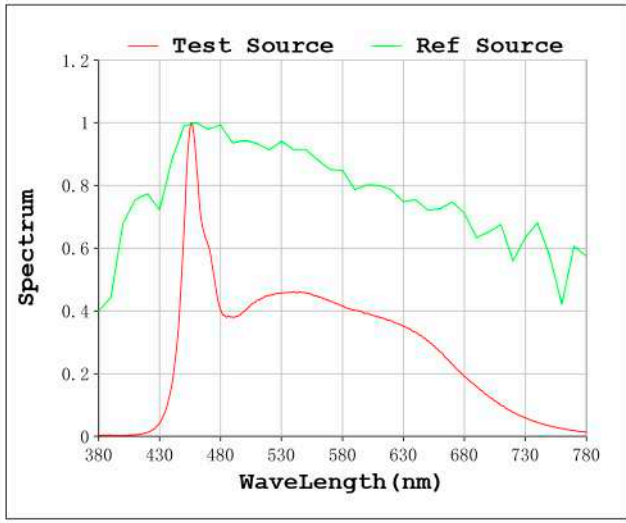
V = 23.998 V I = 0.6018 A P = 14.44 W PF = 1.000

Status: Integral T = 500 ms Ip = 38768 (59%)

Model: Ecoled COB 6500K
 Tester: Sergio Carneros
 Temperature: 13Deg
 Manufacturer: Luz Negra

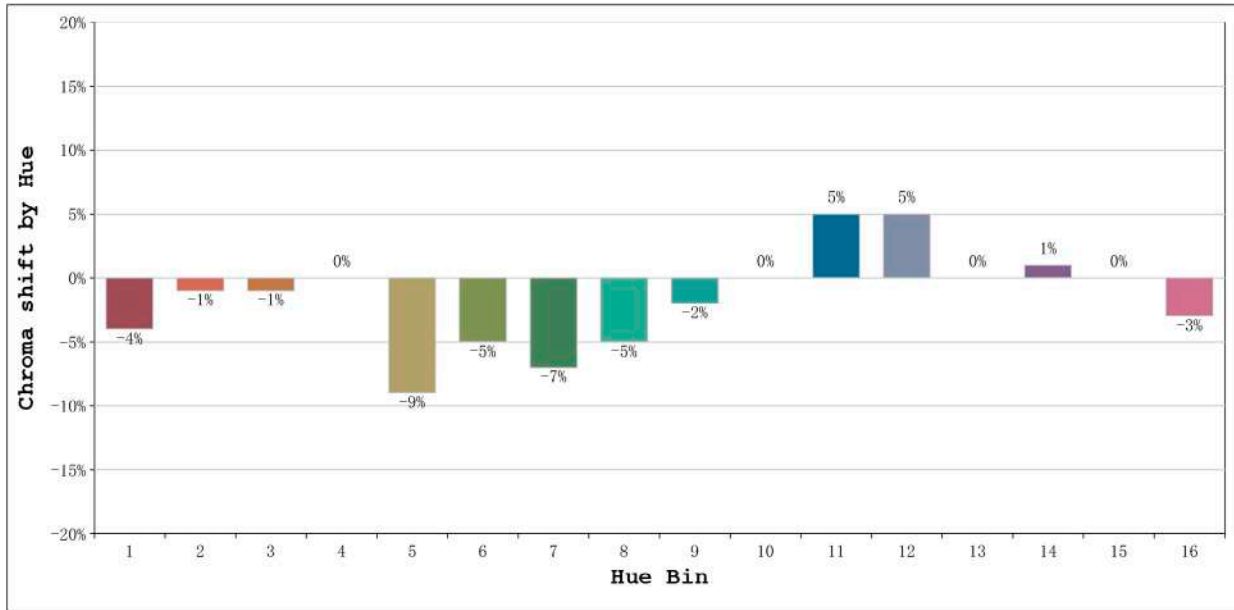
Number: 31.001
 Date: 25-5-2021
 Humidity: 57%
 Remarks: 100cm de tira flexible

Rf: 87 CCT: 6236 K u': 0.1957
Rg: 95 Duv: 0.0078 v': 0.4755



Model:Ecoled COB 6500K
Tester:Sergio Carneros
Temperature:13Deg
Manufacturer:Luz Negra

Number: 31.001
Date:25-5-2021
Humidity:57%
Remarks:100cm de tira flexible

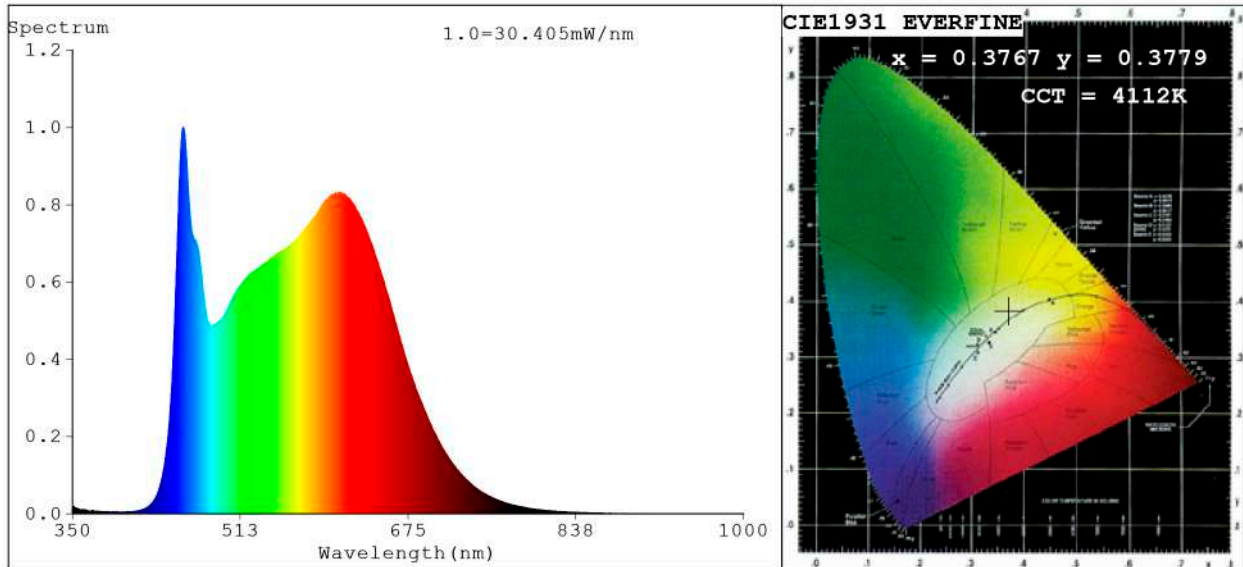


Hue Bin	Hue Angle	Rf	Graphic shift(%)	
			Chroma	Hue
1	0.0° - 22.5°	87	-4	2
2	22.5° - 45.0°	92	-1	1
3	45.0° - 67.5°	94	-1	0
4	67.5° - 90.0°	96	0	0
5	90.0° - 112.5°	83	-9	-3
6	112.5° - 135.0°	90	-5	0
7	135.0° - 157.5°	86	-7	2
8	157.5° - 180.0°	85	-5	6
9	180.0° - 202.5°	84	-2	10
10	202.5° - 225.0°	78	0	14
11	225.0° - 247.5°	84	5	9
12	247.5° - 270.0°	90	5	0
13	270.0° - 292.5°	89	0	-6
14	292.5° - 315.0°	86	1	-8
15	315.0° - 337.5°	81	0	-8
16	337.5° - 360.0°	87	-3	-2

Model:Ecoled COB 6500K
 Tester:Sergio Carneros
 Temperature:13Deg
 Manufacturer:Luz Negra

Number: 31.001
 Date:25-5-2021
 Humidity:57%
 Remarks:100cm de tira flexible

Spectrum Test Report



Color Parameters:

Chromaticity Coordinate: $x=0.3767$ $y=0.3779$ / $u'=0.2222$ $v'=0.5015$
 CCT=4112K (Duv=0.0017) Dominant WL: $\lambda_d = 577.7$ nm Purity=26.4%
 Ratio: R=19.6% G=75.1% B=5.3%; Peak WL: $\lambda_p = 457.1$ nm FWHM=31.8nm
 Render Index: Ra=91.6 CRI=89.4 TM30: Rf=86 Rg=95
 R1 =95 R2 =98 R3 =94 R4 =88 R5 =92 R6 =95 R7 =88
 R8 =82 R9 =65 R10=97 R11=91 R12=71 R13=98 R14=97 R15=91

Photo Parameters:

Flux = 1530 lm Eff. : 96.83 lm/W Fe = 5.177 W Scotopic: 2930.9 S/P: 1.9155

Electrical parameters:

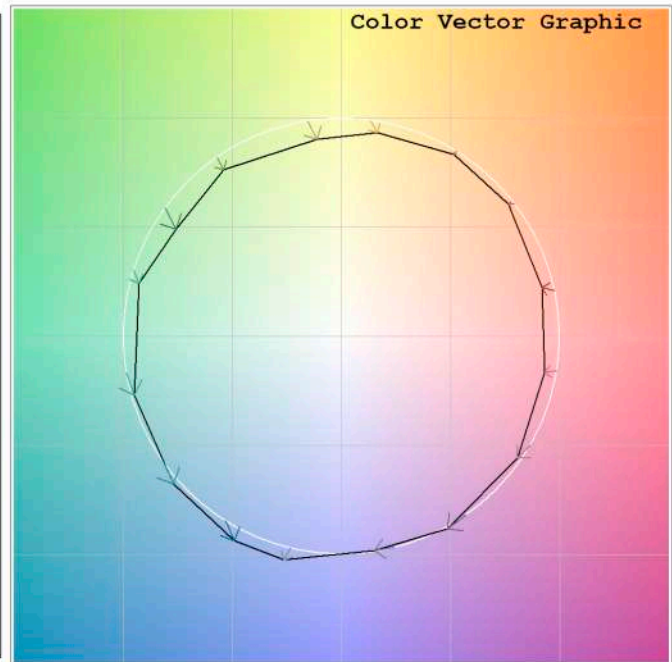
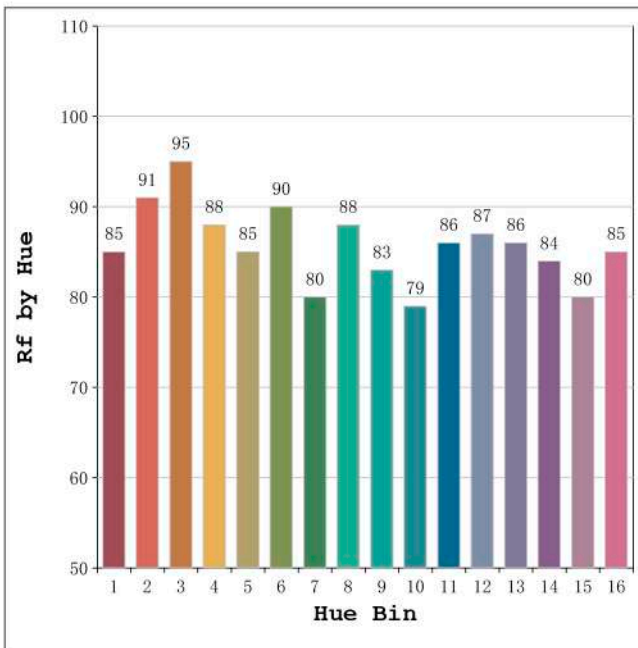
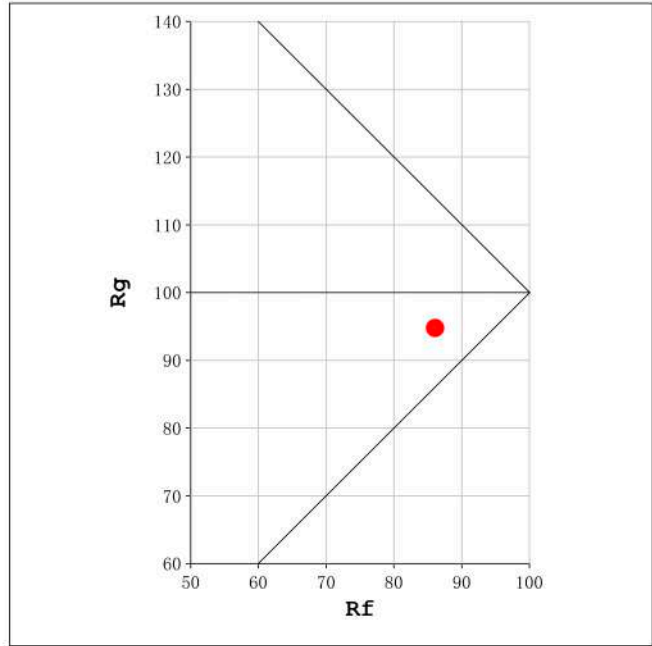
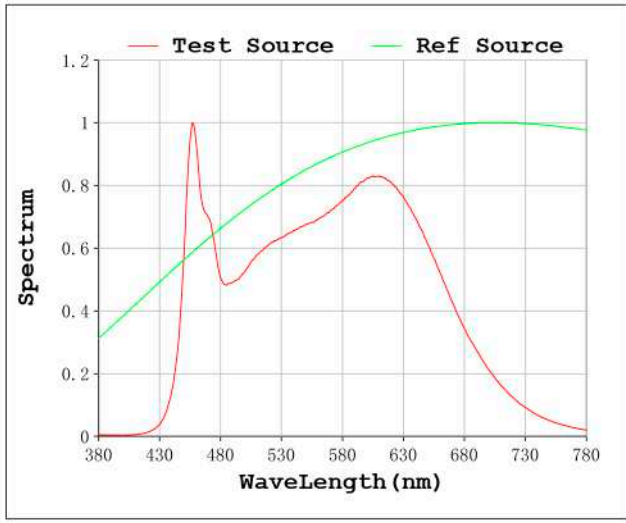
V = 23.998 V I = 0.6585 A P = 15.80 W PF = 1.000

Status: Integral T = 1000 ms Ip = 51031 (78%)

Model: Ecoled COB 4000K
 Tester: Sergio Carneros
 Temperature: 13Deg
 Manufacturer: Luz Negra

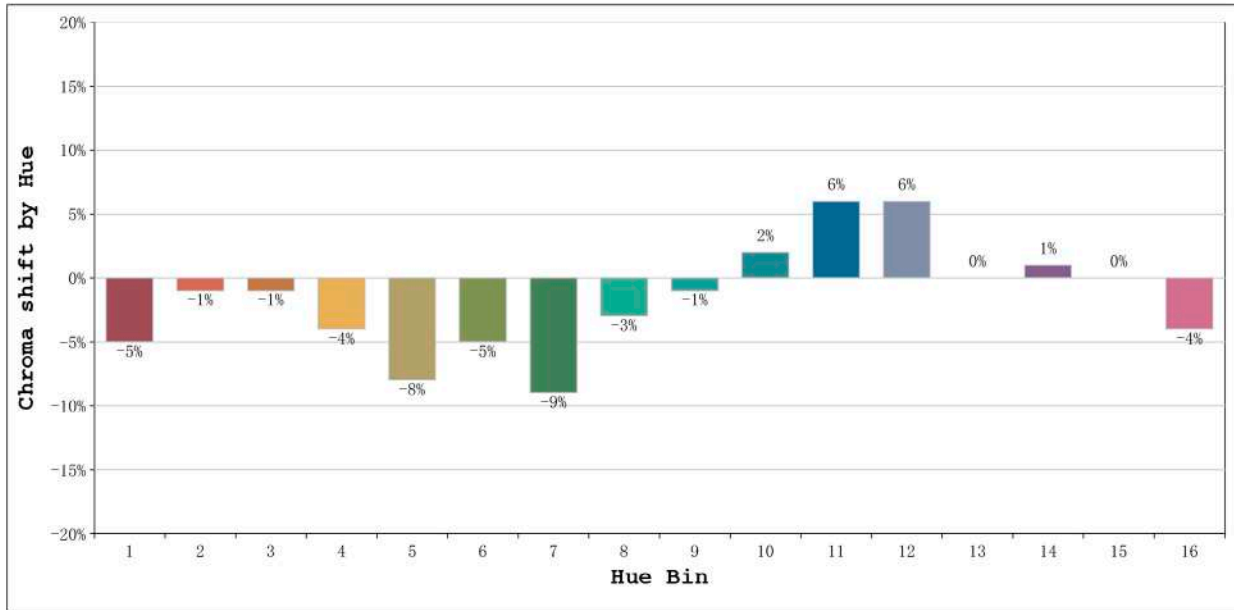
Number: 31.002
 Date: 25-5-2021
 Humidity: 65%
 Remarks: 100cm de tira flexible

Rf: 86 CCT: 4112 K u': 0.2222
Rg: 95 Duv: 0.0017 v': 0.5015



Model:Ecoled COB 4000K
Tester:Sergio Carneros
Temperature:13Deg
Manufacturer:Luz Negra

Number:31.002
Date:25-5-2021
Humidity:65%
Remarks:100cm de tira flexible

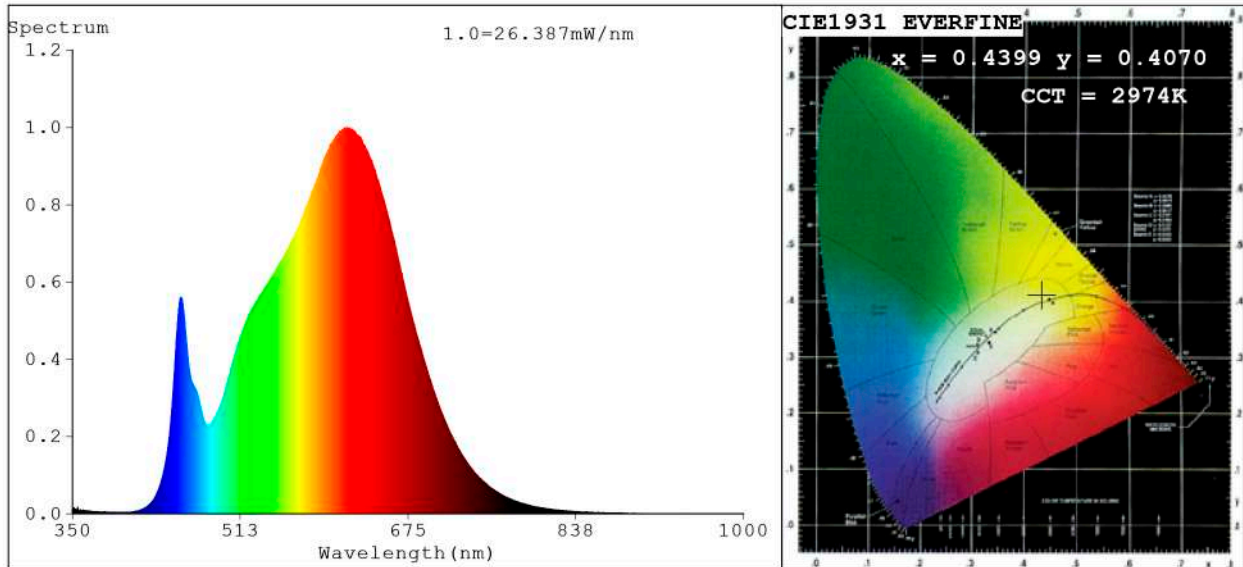


Hue Bin	Hue Angle	Rf	Graphic shift(%)	
			Chroma	Hue
1	0.0° - 22.5°	85	-5	3
2	22.5° - 45.0°	91	-1	1
3	45.0° - 67.5°	95	-1	0
4	67.5° - 90.0°	88	-4	-3
5	90.0° - 112.5°	85	-8	-2
6	112.5° - 135.0°	90	-5	0
7	135.0° - 157.5°	80	-9	5
8	157.5° - 180.0°	88	-3	5
9	180.0° - 202.5°	83	-1	11
10	202.5° - 225.0°	79	2	12
11	225.0° - 247.5°	86	6	8
12	247.5° - 270.0°	87	6	-1
13	270.0° - 292.5°	86	0	-8
14	292.5° - 315.0°	84	1	-10
15	315.0° - 337.5°	80	0	-7
16	337.5° - 360.0°	85	-4	-1

Model:Ecoled COB 4000K
 Tester:Sergio Carneros
 Temperature:13Deg
 Manufacturer:Luz Negra

Number:31.002
 Date:25-5-2021
 Humidity:65%
 Remarks:100cm de tira flexible

Spectrum Test Report



Color Parameters:

Chromaticity Coordinate: $x=0.4399$ $y=0.4070$ / $u'=0.2512$ $v'=0.5230$
 CCT=2974K (Duv=0.0008) Dominant WL:Ld =582.7nm Purity=54.2%
 Ratio:R=24.1% G=73.1% B=2.8%; Peak WL:Lp=616.1nm FWHM=161.1nm
 Render Index:Ra=91.1 CRI=87.5 TM30:Rf=89 Rg=98
 R1 =91 R2 =95 R3 =98 R4 =90 R5 =90 R6 =94 R7 =91
 R8 =79 R9 =52 R10=88 R11=91 R12=76 R13=92 R14=99 R15=86

Photo Parameters:

Flux = 1330 lm Eff. : 90.77 lm/W Fe = 4.560 W Scotopic:1847.6 S/P:1.3888

Electrical parameters:

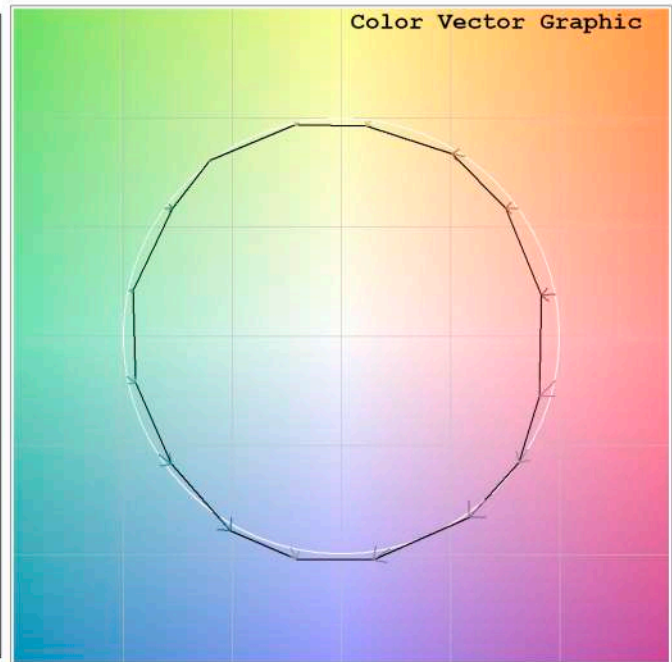
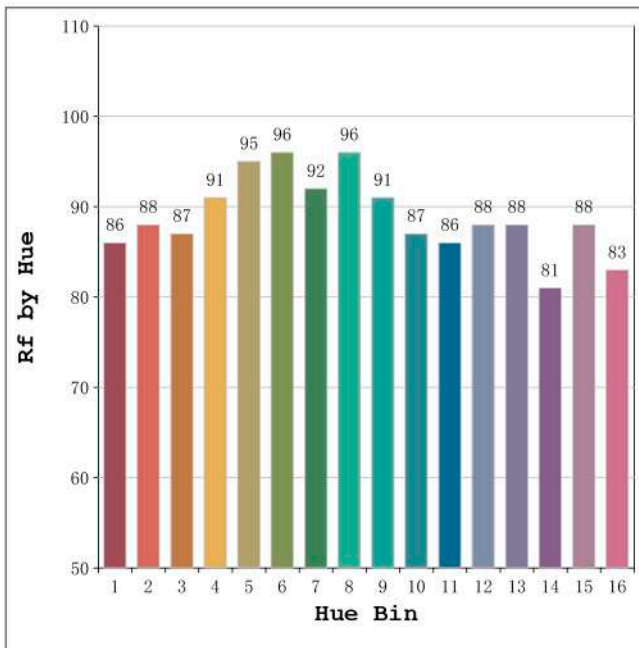
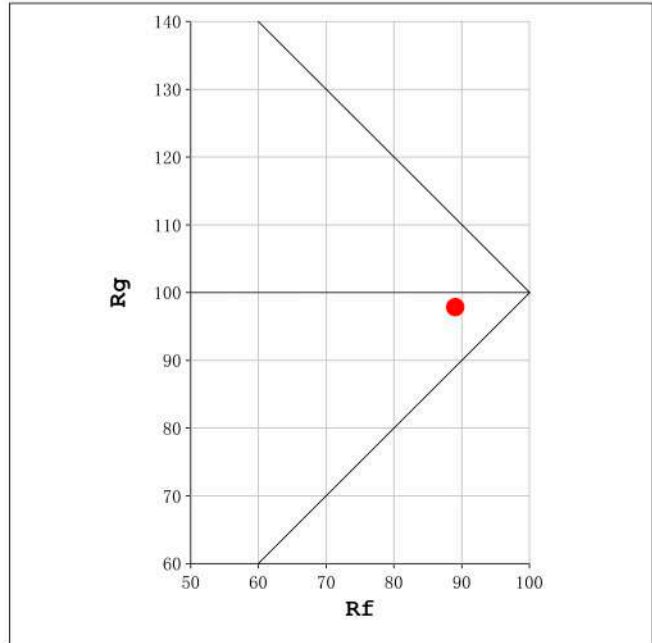
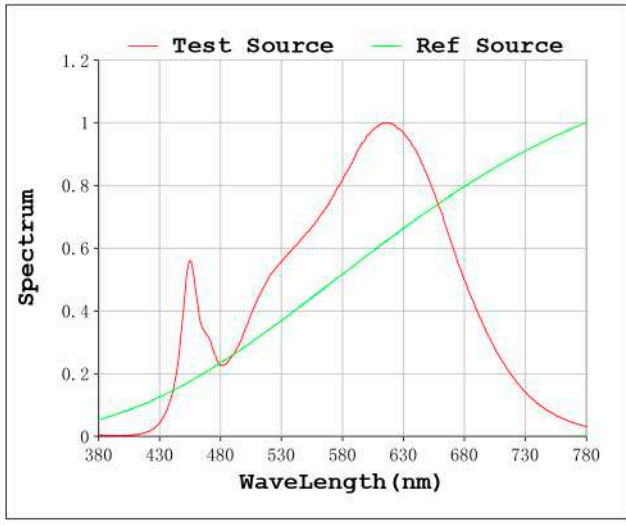
V = 23.998 V I = 0.6107 A P = 14.66 W PF = 1.000

Status: Integral T = 1000 ms Ip = 47456 (72%)

Model:Ecoled COB 3000K
 Tester:Sergio Carneros
 Temperature:21Deg
 Manufacturer:Luz Negra

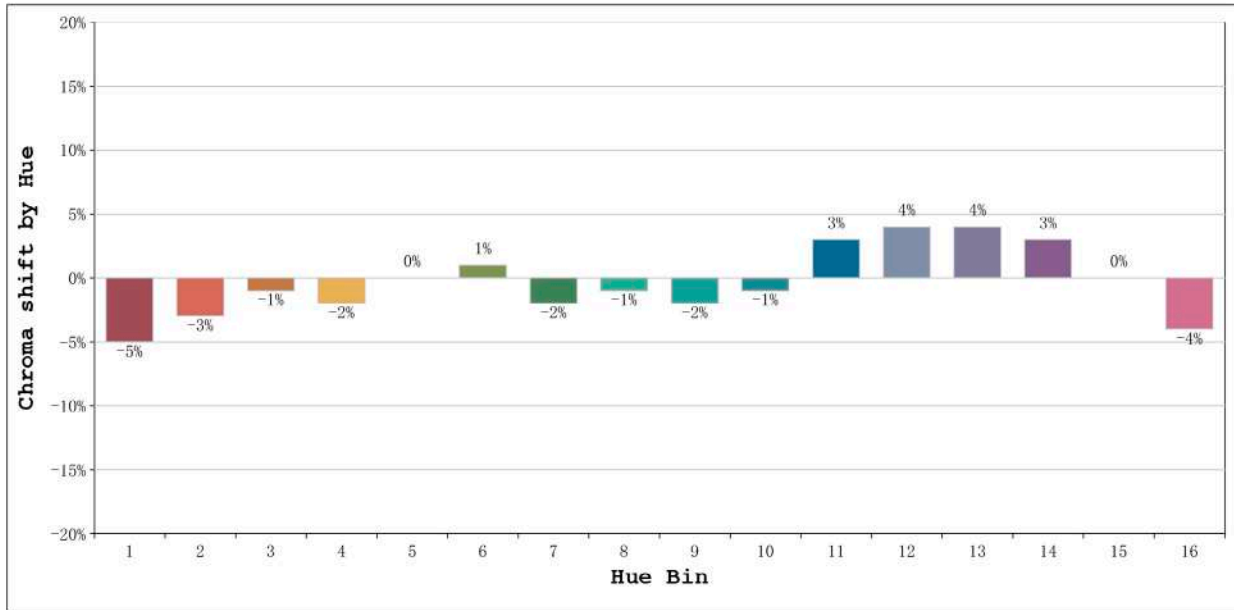
Number: 31.003
 Date:25-5-2021
 Humidity:57%
 Remarks:100cm de tira flexible

Rf: 89 CCT: 2974 K u': 0.2512
Rg: 98 Duv: 0.0008 v': 0.5230



Model:Ecoled COB 3000K
Tester:Sergio Carneros
Temperature:21Deg
Manufacturer:Luz Negra

Number: 31.003
Date:25-5-2021
Humidity:57%
Remarks:100cm de tira flexible

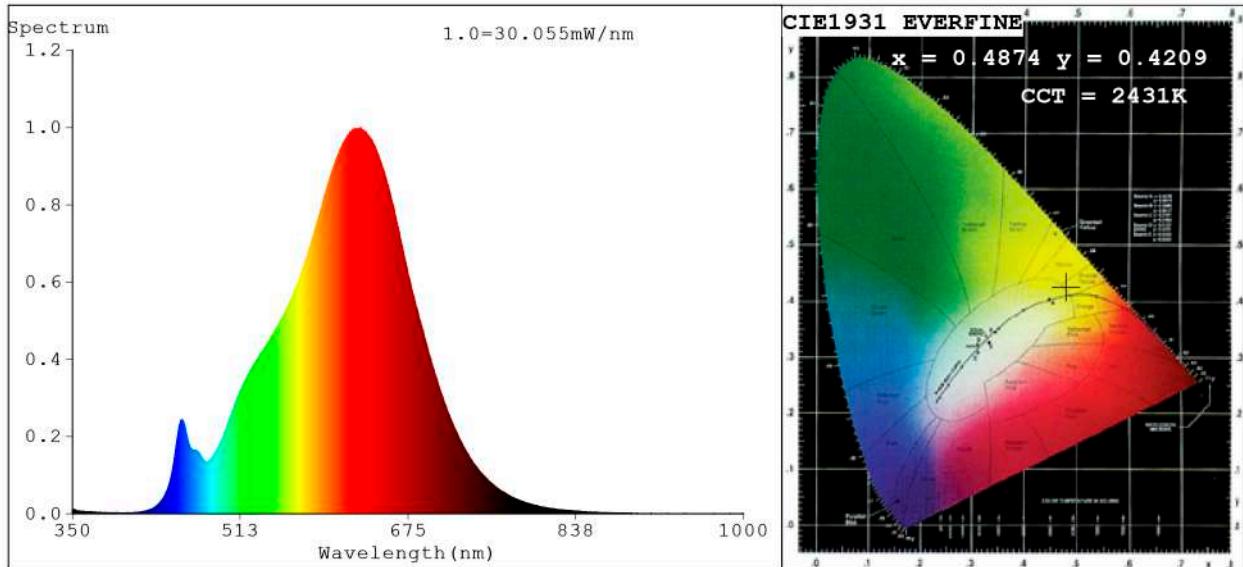


Hue Bin	Hue Angle	Rf	Graphic shift(%)	
			Chroma	Hue
1	0.0° - 22.5°	86	-5	1
2	22.5° - 45.0°	88	-3	3
3	45.0° - 67.5°	87	-1	5
4	67.5° - 90.0°	91	-2	1
5	90.0° - 112.5°	95	0	2
6	112.5° - 135.0°	96	1	0
7	135.0° - 157.5°	92	-2	-1
8	157.5° - 180.0°	96	-1	0
9	180.0° - 202.5°	91	-2	3
10	202.5° - 225.0°	87	-1	7
11	225.0° - 247.5°	86	3	8
12	247.5° - 270.0°	88	4	4
13	270.0° - 292.5°	88	4	-7
14	292.5° - 315.0°	81	3	-10
15	315.0° - 337.5°	88	0	-6
16	337.5° - 360.0°	83	-4	-8

Model:Ecoled COB 3000K
Tester:Sergio Carneros
Temperature:21Deg
Manufacturer:Luz Negra

Number: 31.003
Date:25-5-2021
Humidity:57%
Remarks:100cm de tira flexible

Spectrum Test Report



Color Parameters:

Chromaticity Coordinate: $x=0.4874$ $y=0.4209$ $u'=0.2755$ $v'=0.5353$
 CCT=2431K (Duv=0.0021) Dominant WL:Ld =585.1nm Purity=72.7%
 Ratio:R=28.7% G=69.4% B=1.9%; Peak WL:Lp=629.0nm FWHM=135.2nm
 Render Index:Ra=92.0 CRI=89.1 TM30:Rf=90 Rg=96
 R1 =92 R2 =96 R3 =99 R4 =92 R5 =91 R6 =97 R7 =91
 R8 =79 R9 =54 R10=90 R11=93 R12=83 R13=93 R14=99 R15=86

Photo Parameters:

Flux = 1265 lm Eff. : 76.93 lm/W Fe = 4.661 W Scotopic:1424.4 S/P:1.1261

Electrical parameters:

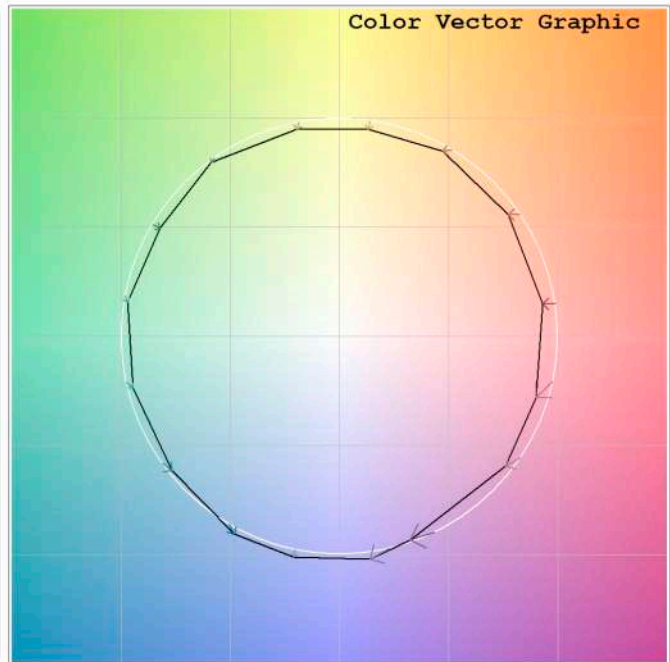
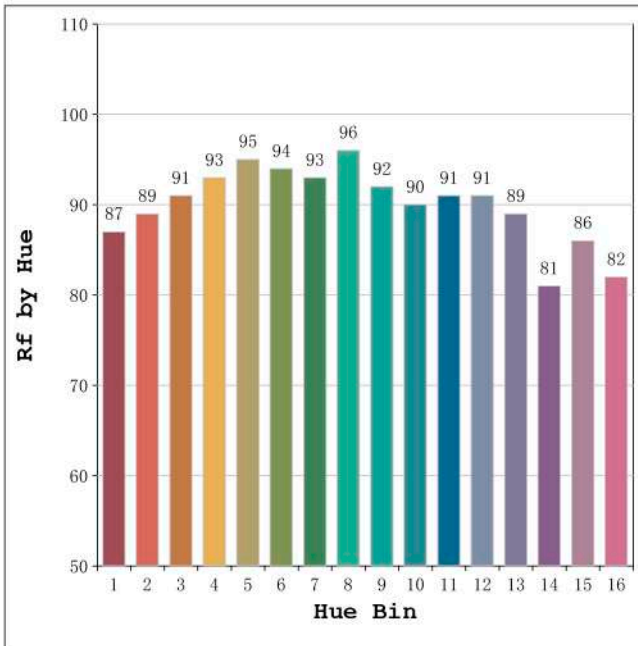
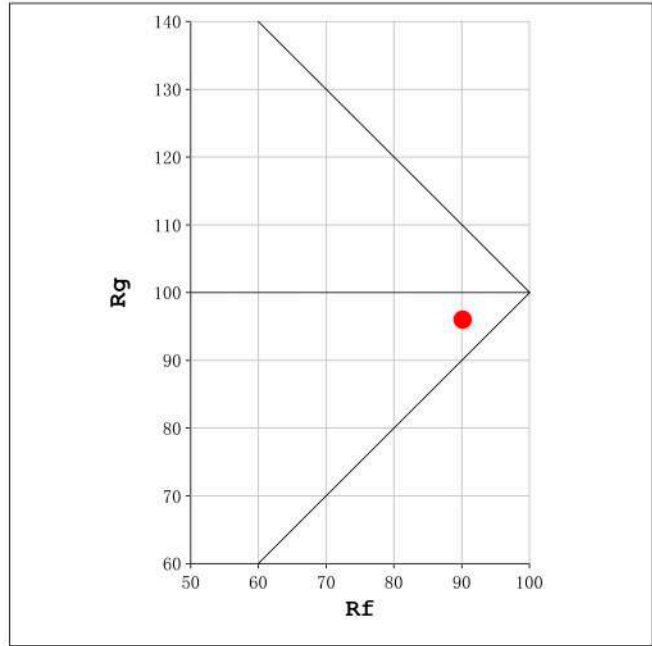
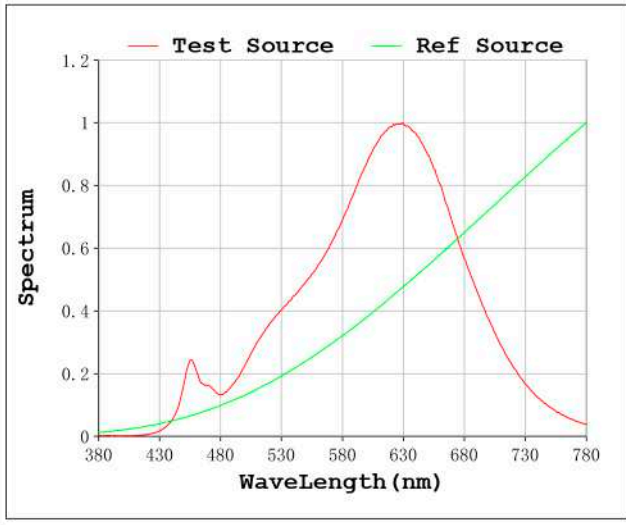
V = 23.998 V I = 0.6851 A P = 16.44 W PF = 1.000

Status: Integral T = 1000 ms Ip = 51455 (79%)

Model:Ecoled COB 2500K
 Tester:Sergio Carneros
 Temperature:25Deg
 Manufacturer:Luz Negra

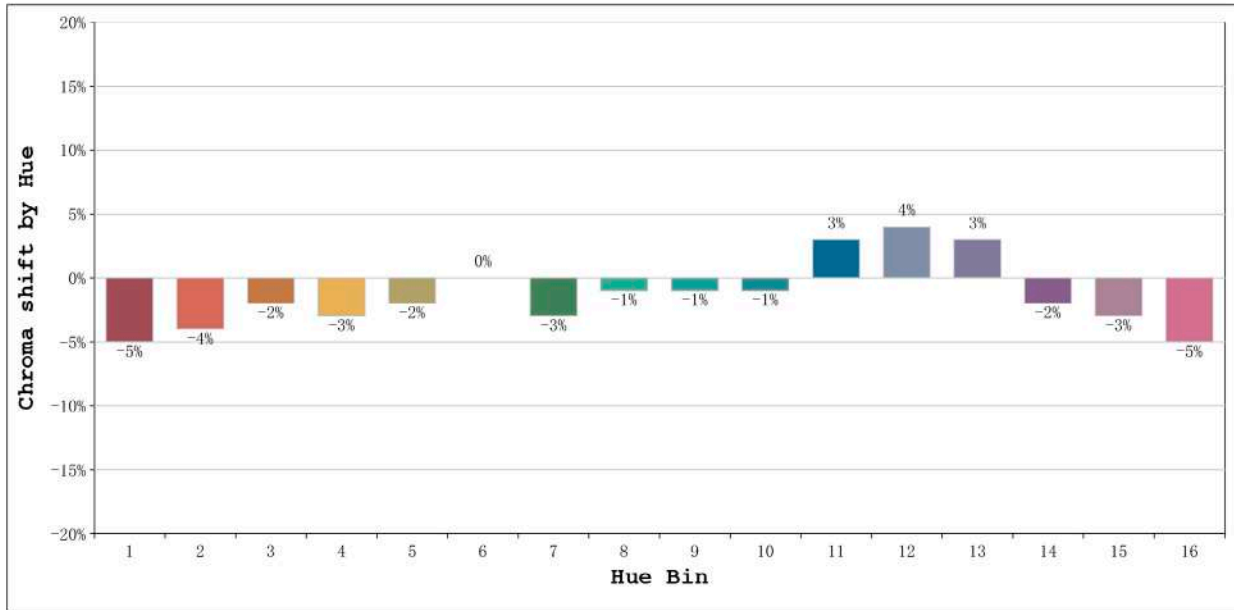
Number: 31.004
 Date:25-5-2021
 Humidity:57%
 Remarks:100cm de tira flexible

Rf: 90 CCT: 2431 K u': 0.2755
Rg: 96 Duv: 0.0021 v': 0.5353



Model:Ecoled COB 2500K
Tester:Sergio Carneros
Temperature:25Deg
Manufacturer:Luz Negra

Number: 31.004
Date:25-5-2021
Humidity:57%
Remarks:100cm de tira flexible



Hue Bin	Hue Angle	Rf	Graphic shift(%)	
			Chroma	Hue
1	0.0° - 22.5°	87	-5	1
2	22.5° - 45.0°	89	-4	3
3	45.0° - 67.5°	91	-2	3
4	67.5° - 90.0°	93	-3	0
5	90.0° - 112.5°	95	-2	2
6	112.5° - 135.0°	94	0	2
7	135.0° - 157.5°	93	-3	0
8	157.5° - 180.0°	96	-1	2
9	180.0° - 202.5°	92	-1	3
10	202.5° - 225.0°	90	-1	5
11	225.0° - 247.5°	91	3	5
12	247.5° - 270.0°	91	4	0
13	270.0° - 292.5°	89	3	-9
14	292.5° - 315.0°	81	-2	-10
15	315.0° - 337.5°	86	-3	-6
16	337.5° - 360.0°	82	-5	-8

Model:Ecoled COB 2500K
Tester:Sergio Carneros
Temperature:25Deg
Manufacturer:Luz Negra

Number: 31.004
Date:25-5-2021
Humidity:57%
Remarks:100cm de tira flexible